

PLX One-Weld

Secondary Contained EF Fittings



In addition to our specialist fuel conveyance pipework system; PLX, we have introduced a new range of electrofusion PLX fittings designed to significantly improve installation time on site. PLX One-Weld reduces the amount of pipe preparation time required and allows both the primary and secondary joints to be welded simultaneously in one weld cycle.



4 welds within one electrofusion cycle



Interstitial monitoring as standard



Saving significant installation time (average 15 minutes per fitting)



Manual and barcode welding options



Designed for use with PLX secondary contained close fit pipe

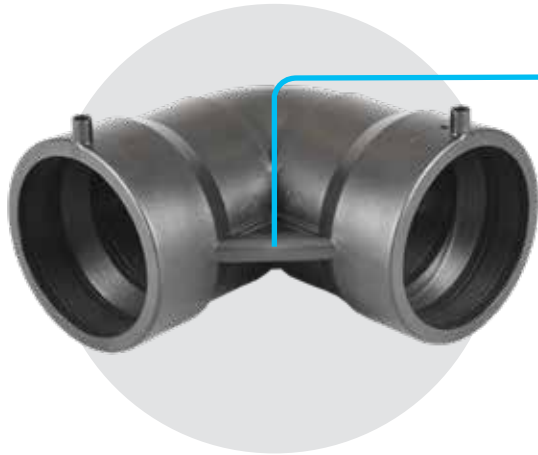


Industry first One-Weld elbow



PLX One-Weld

Secondary Contained EF Fittings

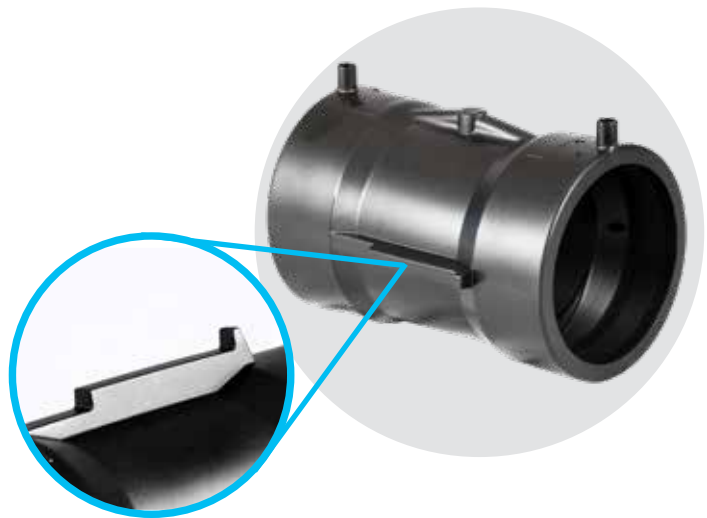


Interstitial monitoring

PLX One-Weld fittings are designed to allow effective monitoring of the interstitial space between the primary and secondary joints for optimum leak detection.

Integrated pipe measurement tool

The PLX One-Weld coupler features an integrated measurement tool that provides easy and accurate socket depth measurement for primary and secondary joints.



PLX Hand-Held Pipe Clamp

Designed to easily secure both primary and secondary PLX pipes in position during electrofusion jointing to prevent movement.

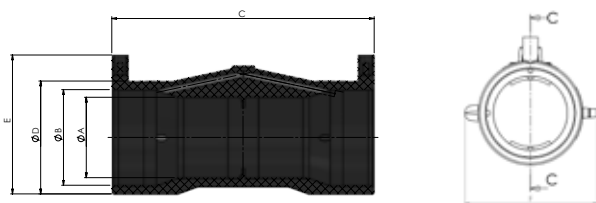
PLX One-Weld

Secondary Contained EF Fittings



One-Weld EF Coupler

PLX Product Code	Description
43100445	PLX 63-75 mm S/C E/F One Weld Coupler
43100447	PLX 110-125 mm S/C E/F One Weld Coupler

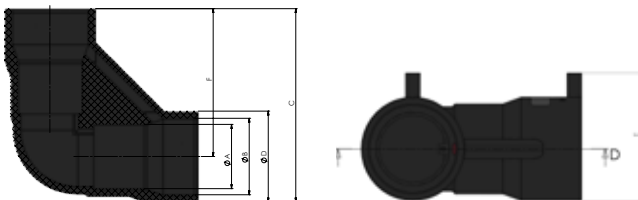


Size	A	B	C	D	E	F
63#75mm	63.5	75.25	207	89	109.5	114
110#125mm	110.8	125.5	229	148.5	166	168



One-Weld EF 90° Elbow

PLX Product Code	Description
43104445	PLX 63-75 mm S/C E/F One Weld Elbow
43104447	PLX 110-125 mm S/C E/F One Weld Elbow



Size	A	B	C	D	E	F
63#75mm	63.5	75.25	189.5	89	109.5	145
110#125mm	110.8	125.5	249.5	148.5	166	175

