



# User Guide Durapipe

Revit 2017

Durapipe

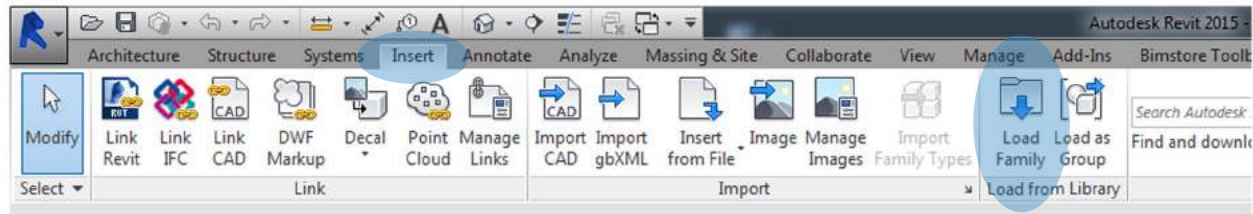
**PLX**

Safe Pipework for Fuel

## Loading the components into your project

You can load the chosen component into your project using the following method.

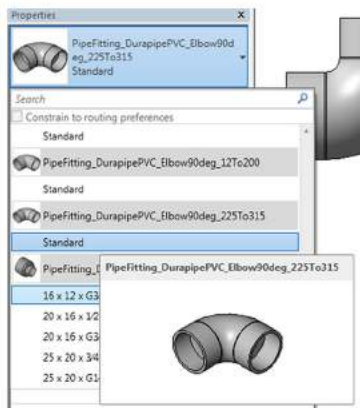
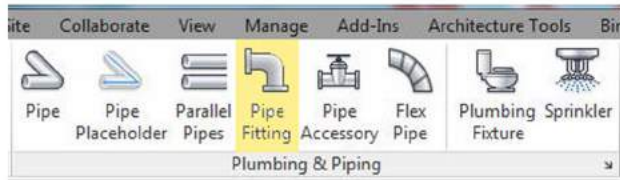
1. Open the Revit file containing your 'project' (.rvt) and navigate to an appropriate view.
2. Go to the insert tab on the Revit ribbon and select 'Load Family'



## Placing the Components

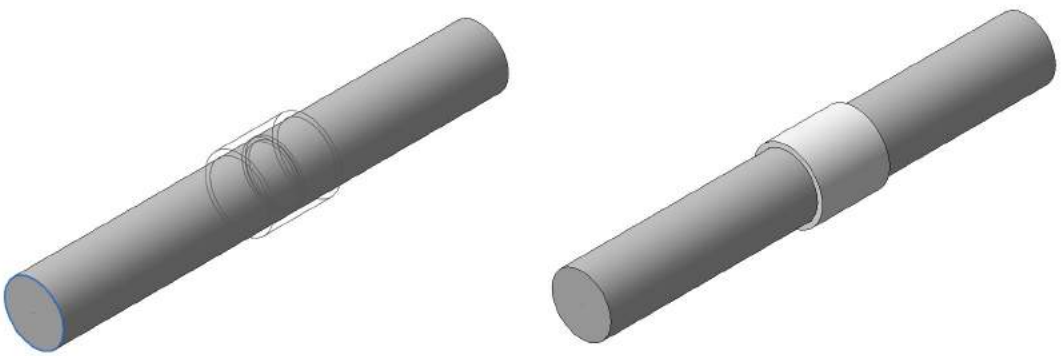
Now the component are loaded into your project you need to place them into your model. As the fittings are created as pipe fitting or accessories you will need a pipe in order to break the pipe fittings into. Please ensure that you have the correct pipe type set up to coordinate with the correct pipe fitting.

1. On the main Revit ribbon go to the 'Systems' tab. Under 'Plumbing and Piping' there is a button for 'Pipe Fitting' as indicated in the image.



2. With 'pipe fitting' selected the types will appear in the 'Properties' dialogue box, typically on the left hand side of the screen. From the drop down menu at the head of this box you can see the type selected and you can click to reveal additional types and families that are loaded in the project. Select the one you would like to place.

3. With the component selected you can now hover the cursor near the pipe and the component will appear ghosted against the pipe. The component will be rotated to be in the same orientation as the pipe. Simply click the mouse to place the component.



4. The component is now part of the piping system. There are various options available to modify the setting out and positioning of the fitting. Firstly, when viewed in plan view, the flip arrow can be used to mirror the position of the component.

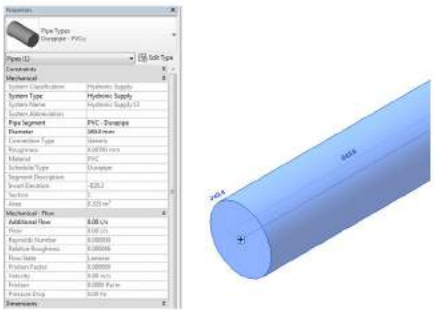
If you require the component to be rotated around the pipe, simply go to a 3D view and select the component. You will notice a rotate and flip symbol appear. By clicking these symbols the component will rotate/flip along the component and each click.

## Setting up Pipe Routing Preferences

The pipe fittings and accessories are designed to be used with Durapipe pipes. The pipes are available in the download file or from [www.bimstore.co](http://www.bimstore.co) and are set up in a project environment for copying and pasting into your project.

It is possible to customise the 'Routing Preference' of these pipes to utilise a specific fitting for certain scenarios. In order to customise your 'Routing Preference' follow the steps below:

1. Select a pipe in your project and select 'Edit Type' from the properties box.



2. This will bring up the 'Type Properties' for the pipe system. Under 'Segments and Fittings' you will find 'Routing Preferences'. Click 'Edit...' to define your routing preferences.
3. From this dialogue box you can load a family and then define how the fitting will behave within the project.
4. Note: You can have two elbow families or two tee families loaded into one routing preference, to do this click on the green '+' sign on the left hand side. However, Revit will use the family loaded at the top of the list as the default fitting for that type of junction. The order of preference can be determined by using the up and down arrows above the green '+' symbol.





Spaceworks  
Benton Park Road  
Newcastle Upon Tyne  
NE7 7LX

+44(0)844 800 6660  
[info@bimstore.co.uk](mailto:info@bimstore.co.uk)  
[www.bimstore.co](http://www.bimstore.co)

© copyright bimstore 2019